



Abbott

Panbio™

COVID-19 Antigen Self-Test

A fast, easy, reliable test that provides results in 15 minutes at home. Available in different kit sizes to meet individual and family needs.



Self-test detects active COVID-19 infection



Illustrated step-by-step instructions



No age restriction: children under 14 years old should be supported by an adult



Simple test procedure using a nasal swab inserted 2cm into the nose



Clinically proven in individuals with and without symptoms

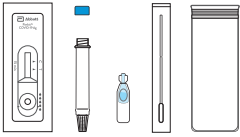


Results in 15 minutes; no need to wait for a healthcare provider

EASY-TO-USE, SIMPLE PROCEDURE WITH COMFORTABLE NASAL SWAB

Please read the full Instructions for Use that come in the product kit box before testing.

1



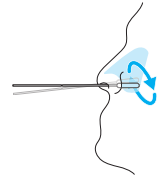
PREPARE MATERIALS*

2



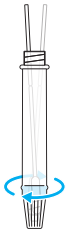
FILL TUBE

3



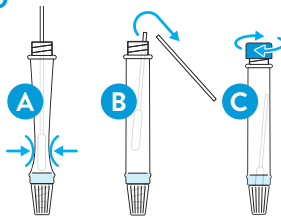
SWAB NOSE

4



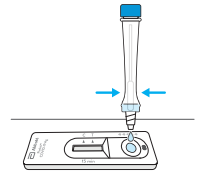
SWIRL SAMPLE

5



PINCH TUBE (A), BREAK OFF
SWAB STICK (B), PLACE BLUE
CAP ON TUBE (C)

6



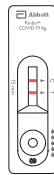
ADD 5 DROPS

7



WAIT 15 MINUTES

8



READ RESULT

*These instructions are the test procedure to complete a single test. Kit component quantities may vary.

FREQUENTLY ASKED QUESTIONS

What is an antigen?

Antigens are proteins that are part of the COVID-19 virus. If the test detects antigens in your nasal sample, it means that an active COVID-19 virus is present in your body.

How accurate is the test?

The Panbio™ COVID-19 Ag Rapid Test Device has been shown in clinical evaluations, performed by healthcare professionals, to correctly identify 98.1% of positive specimens and 99.8% of negative specimens.

Can this test be used on children?

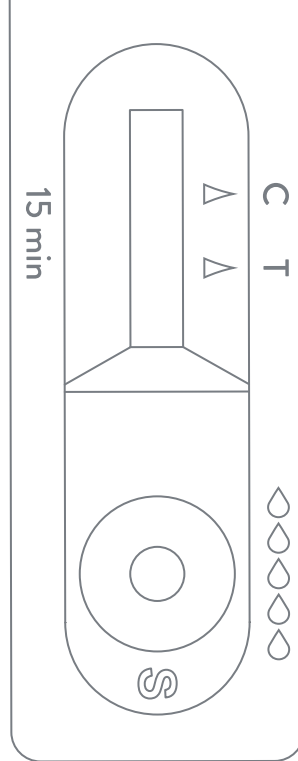
The test has no age restrictions. Children under 14 years old should be supported by an adult.

What does it mean if I have a positive result?

A positive test result means that proteins of the virus that causes COVID-19 have been found in your nasal swab sample. It is likely that you will need to perform self-isolation at home to prevent the spread of COVID-19. Please follow local guidelines for social distancing to limit the spread of the virus and contact your doctor or local health department immediately.

What does it mean if I have a negative result?

A negative test result means that it is unlikely that you have COVID-19 at the time of testing. The test did not detect any antigens in your nasal swab sample. If symptoms continue, you should repeat the test after 1–2 days, as the coronavirus may not be detectable in the very early phases of infection. You are also advised to continue following local guidelines for self-isolation and consult your doctor.



Does this test detect the new COVID-19 variants?

Abbott is intently monitoring for new mutations of COVID-19 so we can ensure our tests can detect them, as we do with many viruses. We have conducted a thorough analysis of known variants that we've been able to study, and we are confident that our tests remain effective at identifying these strains.

Who can help me if I have a product issue or question?

Technical Support is available by calling the phone numbers listed in the Instructions for Use included in the kit.

FOR MORE INFORMATION,
VISIT [SELFTEST.ABBOTT](https://selftest.abbott)

Product not available in all countries. Available to consumers in select markets.
Not approved for sale in the USA.

© 2021 Abbott. All rights reserved. All trademarks referenced are trademarks
of either the Abbott group of companies or their respective owners. Any photos
displayed are for illustrative purposes only. COL-04101-01 06/21 EUA

